

Supporting women. Defeating poverty.



Introduction



“My name is Akanesi Pohivai and I work for Talitha Project, a partner of CARE Australia’s in Tonga.

“It’s my pleasure to introduce CARE Australia’s 2022 Annual Report. I hope you enjoy learning about some of the amazing ways we’ve worked together this year to support women and their communities – happy reading!”

This year, through continuing to evolve our ways of working and dedicating ourselves to supporting local priorities, we achieved some incredible transformations with the help of people like Akanesi.

We have supported women to embrace opportunities and overcome inequality, invested in their sustainable livelihoods, and supported them to become leaders and build resilient communities ready to face the increasing impacts of climate change and economic shocks.

With so many emergencies this year, the interconnectedness between our vital work responding to humanitarian crises and our long-term programs tackling the underlying causes of poverty has never been more urgently needed.

We are proud to be part of one of the world’s largest development networks across 111 countries, and we celebrate the deep connections we have with the local partners and communities who we have worked alongside since 1945.

Gender equality is at the heart of CARE’s overall programming approach. Look for these icons throughout to see how we’re supporting change in three ways:



Building individual agency



Strengthening relations

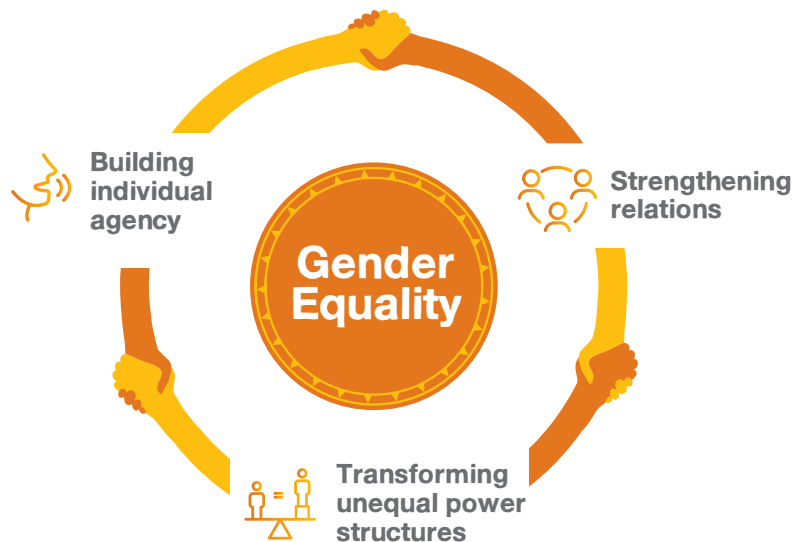


Transforming unequal power structures

Our path towards gender equality

Poverty is caused by the unfair distribution of wealth and resources. While extreme poverty has been declining for almost 25 years, inequality is growing – and conflict, climate change, and the COVID-19 crisis are only making things worse. The solution is equality.

CARE supports women to change unequal power relations, and supports movements that drive transformative change to achieve gender equality.



Building individual agency

Our poverty-fighting programs help build the self-esteem, confidence, and aspirations of people experiencing gender discrimination.

Through helping women develop knowledge, skills, and capabilities, they are able to seize opportunities to earn an income, have sustainable livelihoods, and develop the resilience to withstand the increasing impacts of climate disasters and emergencies.



Strengthening relations

We work with families and communities; within economic and government spheres; marketplaces; and entire societies to change inequitable dynamics that sustain gender inequality.

This helps women claim their fair share of resources and opportunities, assume leadership positions, and participate in decisions that affect their lives.



Transforming unequal power structures

We seek to shift resources and decision-making power to those most impacted by poverty. We are reshaping the very systems which exclude people from power by advocating against discriminatory laws and working with leaders to transform harmful and discriminatory practices. We strive for more diverse representation in social, economic and political spheres, to ensure people of all genders can realise their full potential.

Gender justice: supporting her to have equal opportunities

In many places, COVID-19 has rolled back decades of progress towards gender equality. CARE Australia is supporting women as they fight to build back better.

“Everybody deserves to be heard.”

- Georgilla, Vanuatu

After joining CARE Australia’s Young Women’s Leadership Program, Georgilla unlocked her self-confidence and set her sights on making a difference. Her new public speaking skills combined with her passion for activism helped her get a job hosting a radio program on “Femme Pawa” 99 FM where she can be heard all over Vanuatu, speaking up for gender equality.

“It is my job at Femme Pawa FM to help shape public opinion about issues regarding gender and human rights. Because we want to see a change in people’s behaviour,” Georgilla says.



HIGHLIGHTS



In Jordan, women with disabilities are now using YouTube to express themselves. It allows them to amplify their voices, build confidence, and raise awareness about their challenges.



In the Philippines, women’s groups are being trained to provide support for survivors of gender-based violence and help them access ways to report safely.



In Timor-Leste, community leaders have come together to improve the health system for pregnant women and to change negative attitudes about modern contraception.

Climate justice: supporting her to strengthen her resilience

Climate disasters are causing endless crises – amplifying existing inequalities faced by women and girls. CARE Australia is supporting women to take a lead role in preparing for, and adapting to, future crises and a changing climate.

“We ensure everyone’s needs are considered.”

- Julmeira, Timor-Leste

Julmeira makes sure women in her community in Timor-Leste are not left behind as climate change threatens their future.

CARE Australia supported Julmeira to get a role in her community’s Disaster Management Committee – making her one of few women with that responsibility. She’s helping tailor disaster plans to include the needs of women, the elderly and people with disabilities, to make sure they can withstand whatever shocks they may face.

“Not only have I been empowered and skilled to support my community from life-threatening events, but I can see the practical value of women’s participation in disaster risk reduction activities,” Julmeira says.



HIGHLIGHTS



In Tonga, women are being trained as leaders and gaining the knowledge and skills to prepare for emergencies and save the lives of their community members when disaster strikes.



In Vanuatu, savings groups have been set up so women are able to borrow money from the community in the event of disaster.



In Timor-Leste, the Government and private sector organisations are working with communities to ensure water sources are preserved and that areas vulnerable to landslides are protected.

Economic justice: supporting her to invest in her livelihood

Unfair barriers and discrimination keep women from financial independence. CARE Australia supports women to earn a fair wage in dignified work, and to have a say in how it's spent.

“Who would ever have thought we could have this kind of income!” - Silaumua, Samoa

Silaumua found financial independence through skills she learnt from CARE Australia's partner organisation, Women in Business Development Inc. She was trained in the best methods to grow healthy vegetables in quantities large enough to sell the excess.

“Now I can afford to give my children decent meals,” she explained. “We sell the excess to get money for our children's needs.

“Grow your own vegetable garden,” Silaumua tells other women. “It will give you a source of income to help feed your family!”

Silaumua knows that the skills she is passing on are helping secure a bright future for everyone.



HIGHLIGHTS



In Bangladesh, Rohingya women living as refugees are earning an income by making products they can sell, such as masks, clothes and reusable sanitary pads.



In Vietnam, women farmers from ethnic minorities are challenging harmful social norms and shifting attitudes to become recognised as skilled producers of high quality coffee.



In Papua New Guinea, we are helping the cocoa industry connect women farmers with companies who buy their produce in bulk, increasing their participation in the cocoa market and improving their returns.

Emergency response: supporting her through crisis

COVID-19, climate disasters, conflict and the global hunger crisis have seen our global humanitarian response double in scale in less than three years. CARE Australia is driving the call for not only more aid, but better aid.

“Talitha Project is a women-led organisation. And that makes us more efficient and effective” - Akanesi, Tonga

When a volcanic eruption and subsequent tsunami impacted more than 80 per cent of Tonga, CARE Australia’s partners, [MORDI Tonga Trust](#) and [Talitha Project](#) immediately responded to support families who had lost their homes, crops and livelihoods.

They delivered shelter materials for those whose houses were damaged, clean water, and dignity kits for women and girls – which contained locally-sourced hygiene items. Supplies were also prepositioned in preparation for future disasters.

“Because we know our communities, we were able to rapidly assess the most pressing needs and shift our focus to address them,” says Talitha Project staff member Akanesi (pictured in the introduction).

This year, CARE Australia responded to 15 emergencies directly and through local partner organisations, and raised funds to deliver emergency support for 10 humanitarian responses coordinated by CARE International.



Tonga: MORDI Tonga Trust delivered clean water to 'Eueiki – an island which was inaccessible by larger vessels.

Ukraine: In just six months, more than 15 million people fled their homes as the war escalated – 9 million becoming refugees in neighbouring countries. CARE and our partners reached more than 466,000 people across Ukraine, Georgia, Moldova, Poland and Romania with food, water, temporary shelter, medication, psychosocial support, livelihood assistance, and safe spaces for mothers and babies, the elderly and those with disabilities.





Afghanistan: The devastating earthquake in June demonstrated how fragile the situation in Afghanistan is, with people already facing compounding crises of insecurity, economic hardship and COVID-19. With support from the international community, CARE's Afghanistan teams delivered lifesaving support to more than 200,000 people in 2022, including cash, shelter, and critical health services.



Bangladesh: Conflict in Rakhine State, Myanmar, has forced nearly 1 million Rohingya refugees to flee into neighbouring Bangladesh where many have now lived in makeshift camps for over five years. CARE has reached more than 389,000 people with lifesaving food, water, shelter, and medical support. Our focus is now on preventing and responding to gender-based violence, sexual and reproductive health services, and psychosocial support.

Update from the Chief Executive Officer

It's hard to remember a more tumultuous time for the world, but there is light. Especially when you consider the skills and strengths of the communities we work with. Despite overwhelming challenges, CARE Australia is instrumental in continuing to support women to defeat poverty. And we couldn't do it without our donors, so I hope you read this report knowing that you helped make these things happen.

Thank you

Throughout 2022, CARE Australia's extraordinary supporters have stepped up time and again, offering life-changing donations to those in need. I thank you so much for every contribution you've made to support women and defeat poverty. And I thank all of our incredible staff and partners for their commitment.

We're investing in local knowledge

This year we've found even more ways that we can adapt and change the ways we work in order to achieve the goals set out in our [strategic ambition](#). By partnering with local organisations across Asia and the Pacific we are using every dollar wisely by investing in *their* skills and strengths – treating not only the immediate needs, but importantly the root causes of injustice and inequality.

Together, we are stronger

Everything we do is focused on maximising impact for the communities we seek to support. This year, along with 14 other charities, we jointly founded the [Emergency Action Alliance](#), a new endeavour, which raised \$4 million in 2022 for those affected by the war in Ukraine. In addition to our own critical emergency appeal efforts, the Alliance provides a centralised avenue for Australians to donate much needed funds.

Leading by example

We are a leading voice in the [Pledge for Change](#), a global revolution responding to a burning need

to transform the aid sector. Along with other leading International Non-Governmental Organisations (INGOs), we are reimagining a system that shifts more power into local hands. Harnessing our experience and influence, we are encouraging others to follow suit to improve the overall collective impact of our work and ensure we can all rise to the growing challenges the world is facing.

Staying fit for the future

To ensure we are meeting the challenges of today and those we anticipate in the coming years, we are investing in new initiatives to keep us nimble and able to tackle growing inequality, like new fundraising ideas and programs that offer loans to women to build businesses in their communities. We will continue to invest in new and innovative approaches, and new forms of partnerships that bring in skills and resources to solve increasingly complex global problems.

To do right, we must evolve

We continue to evolve in order to effect change for individuals, communities and to dismantle broken and ineffective structures that keep people in poverty. This means making difficult decisions which, where appropriate, challenge the status quo and hold ourselves accountable to being efficient, effective and 'walking the talk' in terms of our values and our mission. I am inspired by the passion of our supporters here in Australia, our staff and, importantly, our local partners around the world, and especially the communities we work with.



Peter Walton

Chief Executive Officer, CARE Australia

CARE Australia's global community

91 PARTNERS



"It is heartwarming to see land that our forefathers sweated blood and tears over being used again."

- Fuimaono (far right), Women in Business Development Inc., Samoa

768 STAFF



"Battling gender inequality has been my passion throughout all my career."

- Shirleen, CARE Australia staff, Fiji

23,952 DONORS



"The gift I've included in my Will to CARE Australia means their incredible work can continue even after I'm gone."

- Libby, CARE Australia donor for 20 years

94%

of CARE Australia's partners were local organisations.

97.8%

of CARE Australia's Country Office staff were local to the countries in which they worked.

\$12,337,028

was contributed to CARE Australia's poverty-fighting work by our donors.

TOGETHER, WE HAVE:



Supported more than 1.44 million people across 14 countries.



Responded to 15 emergencies across 12 countries.



Raised \$2.6 million through emergency appeals.



Delivered humanitarian assistance in times of emergency or crisis to more than 188,000 people.

Our Donors

CARE Australia thanks these generous individuals, trusts and foundations, and organisations who supported us in 2021/22, and we acknowledge and thank those who have chosen not to have their names published.

Multilateral

Consultative Group on International Agriculture (CGIAR)
 Directorate General for International Partnerships (DEVCO)
 European Commission Humanitarian Office (ECHO)
 European Investment Bank
 European Union
 International Fund for Agricultural Development (IFAD)
 International Labour Organization (ILO)
 Secretariat for the Pacific Community (SPC)
 UN Women
 United Nations Development Programme (UNDP)
 United Nations Population Fund (UNFPA)
 United Nations Children's Fund (UNICEF)
 United Nations Office for Project Services (UNOPS)
 World Bank

Bilateral

Government of Australia
 Government of Canada
 Government of Denmark
 Government of France
 Government of Germany
 Government of Ireland
 Government of Japan
 Government of Luxembourg
 Government of New Zealand
 Government of Norway
 Government of Switzerland
 Government of United States of America

Private donors

ACME Foundation
 Ainsworth 4 Foundation
 Alexander Gusbeth
 Amy and Paul Jasper
 Andrew Tan
 Ann Miller
 Annie & John Paterson Foundation Ltd
 Brennan Family Foundation
 Centre for Disaster Philanthropy
 David Hirsch and Gillian Fox
 Davies Family Foundation
 Goldie Nominees Pty Ltd
 GreaterGood
 Handbury Foundation
 Heather Doig and Rob Koczkar
 Jason Squire
 John Peyton
 Keo Charitable Foundation
 Michael Greenaway
 Neil and Carolyn Andrew
 Pamela Carroll
 Perpetual Ltd
 Peter & Barbara Hoadley Foundation
 Peter and Annie Duncan
 Peter Turner
 Ravine Foundation
 Reef Shark Foundation
 Rosemary Lucas
 Savannah Foundation
 The Dick and Pip Smith Foundation
 The George Lewin Foundation
 The Metamorphic Foundation
 Valerie and John Braithwaite
 Willcocks Family
 Wood Family Foundation

Corporate and other supporters

Accenture
 Art for Afghanistan
 Bank of America
 Bookeo Pty Ltd
 Corrs Chambers Westgarth
 Cummins Inc.
 Epoch Capital Pty Ltd
 Gresham Partners Limited
 King & Wood Malesons
 McKinsey & Company
 NAB
 Norman Disney & Young
 Optus
 Peter Schreurs & Sons Vegetable Farm
 PwC
 Refugee Legal
 Royal Automobile Club of Victoria (RACV) Limited
 SenateSHJ
 START Network

Bequestors

Geoffrey Robert Burfoot
 Ailsa Lillian Calvert
 Elizabeth Ellen Carolan
 Bruce Eric Carroll
 Geoffrey Fernie
 John Arthur Fowler
 Bernard Charles Luxton
 Vincent Pengilly
 Ralph Phillips
 Melvyn Campbell Schlank
 Brian David Skeen



Papua New Guinea: Mike and Alice now share responsibility for managing their family's finances thanks to participating in CARE Australia's gender equality training.

A matter of trust

Our commitment to transparency and accountability

CARE Australia can be trusted to act ethically and transparently to maximise the impact of our poverty-fighting work. We are committed to upholding the highest standards of practice of inclusivity and equality, anti-racism, and social justice. And we can be counted upon to act swiftly and appropriately when things don't go as planned. We actively encourage the reporting of suspected misconduct, and in an organisation our size, are firm believers that 'no reports' would be more alarming than 'some reports'. So every report we do receive assures us that the systems we have in place are working, and that we have a strong culture of reporting and accountability.

An accredited and registered charity

CARE Australia is registered with the Australian Charities and Not-For-Profit Commission (ACNC) and is fully accredited by Australia's aid program, through the Department of Foreign Affairs and Trade (DFAT). CARE Australia has the ACNC Registered Charity Tick and through the Australian Taxation Office (ATO) is a deductible-gift recipient. We are a member of the Fundraising Institute of Australia.

CARE Australia is a signatory to the Australian Council for International Development (ACFID) Code of Conduct, which sets out standards of management, communications, and spending. CARE Australia is committed to full adherence to the Code of Conduct. CARE Australia is also a signatory to several international codes of conduct (care.org.au/codes-of-conduct).

Privacy and cybersecurity

We operate in an environment where cyber attacks are becoming more frequent and sophisticated. We take the security of our participants' and donors' data and their privacy seriously. We have systems in place to protect the information we hold, and are continuously strengthening them to prevent unauthorised access.

CARE Australia is fully compliant with the Payment Card Industry Data Security Standard (PCI DSS), ensuring all online transactions are secure and protected against identity theft.

This year, we invested in a new database and marketing platform which enhances the security of our donor data and preferences and streamlines the way we communicate with our supporters.

Preventing Sexual Harassment, Exploitation, Abuse, and Child Abuse

CARE Australia is vigilant in seeking to prevent sexual misconduct, exploitation, abuse, and child abuse in all of the countries in which we work.

We are committed to promoting and protecting the interests and safety of children, vulnerable adults, communities and personnel. We take proactive steps to foster an environment where our staff and partners are aware of their obligations and expected behaviours and where they and the communities we work with are aware of the steps to take to report concerns.

In 2021/22 we received three reports relating to Preventing Sexual Harassment, Exploitation, Abuse, and Child Abuse concerns.

Our organisational response to every report was considered, appropriate, and proportionate. Our investigations found one report to be substantiated,

which led to the termination of a contractor's engagement, support for the victim survivor, and additional training delivered to all staff around the importance of immediately reporting concerns.

We make every effort to support and empower people who experience misconduct by prioritising their rights, needs and wishes. Responses and disciplinary measures are tailored to the circumstance of the situation.

We are also aware of incidents where CARE Australia staff were subjected to domestic and gender-based violence by perpetrators from their personal life — an unfortunately common occurrence. While those are not recorded in this report as they are unrelated to their employment with CARE Australia, we offer appropriate support to these staff members, as well as guidance and referral pathways. These measures are above the requirements of our reporting standards, but are an important part of CARE Australia's mission to support women, and our commitment to gender equality.

CARE Australia's Preventing Sexual Harassment, Exploitation, Abuse, and Child Abuse reports from 2021/22 — presented as part of our commitment to transparency:

Type of abuse	Reports filed	Substantiated	Outcome
Sexual harassment	2	1	<p>One report related to sexual harassment of a staff member by a contractor. It was substantiated, and resulted in the termination of the contractor's engagement, support for the victim survivor, and additional training delivered to all staff around the importance of immediately reporting concerns.</p> <p>One report related to sexual harassment of a staff member by another staff member. The investigation found the report to be unsubstantiated.</p>
Sexual abuse	1	0	<p>One report alleged sexual abuse of a project participant by a staff member. The investigation found the report to be unsubstantiated.</p>

Our people

CARE Australia chaired the [Trust Alliance](#), which supports the Misconduct Disclosure Scheme, helping ensure the people we and our peers hire have not breached codes of conduct in their previous workplaces. We applied these to every new applicant before recruitment to make sure we only bring trustworthy people to CARE Australia.

Our updated Gender Equality and Inclusion Policy is at the heart of our work – impacting how we hire, promote, govern, lead and mobilise resources and partners. Its principles guide our efforts to ensure marginalised groups are not left out of decision-making, enabling us to deliver faithfully on our mission and demonstrating our integrity and credibility as a leader in the gender equality space.

We remain committed to anti-racism in all aspects of the way CARE Australia operates and we seek every opportunity to improve. This commitment means our programs are informed by examining the power structures and barriers which women and their communities are facing in their specific contexts, and that we work to ensure decision-making and the allocation of resources is equitable.

No tolerance for fraud and corruption

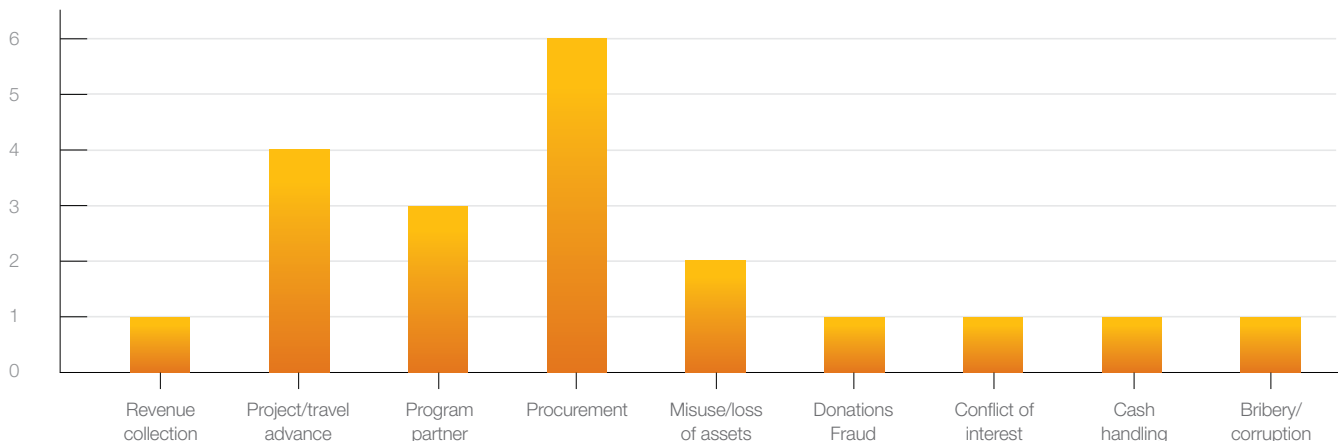
All suspected fraud cases are thoroughly investigated and – where substantiated – disciplinary action and recovery of loss are pursued.

Reporting of suspected fraud and corruption is encouraged, with a number of avenues available, including the option to remain anonymous. Our training, policies and processes focus heavily on the prevention and early identification of suspected fraud and corruption, and staff and suppliers are screened for links to terrorist organisations.

In 2021/22, there were 20 suspected incidents of fraud across the countries in which we work. In accordance with CARE Australia's zero tolerance policy, all suspected incidents have been appropriately investigated. Thirteen of the suspected cases were substantiated. The total financial loss to fraud in 2021/22 was \$60,000 – roughly 0.08% of our total expenditure. Given the complex and vulnerable environments in which we work, we consider this to be a testament to the integrity and professionalism of the overwhelming majority of the 1.44 million project participants, staff, and partner organisations involved in CARE Australia's work.

Details on CARE Australia's approach to preventing and responding to fraud and corruption are available on the CARE Australia website at care.org.au/fraud-and-corruption-policy.

Number of suspected fraud cases in 2021/22



Our finances

We work hard to invest every dollar wisely: building strong and trusting partnerships with local organisations, backed up with strong financial stewardship and a commitment to efficiency and effectiveness in all activities.

While monitoring our spending and keeping track of the number of people we reach helps us measure our efficiency, it's vital to complement this with evaluations that show the true impact and quality of our programs in order to make sure we are facilitating genuinely positive and lasting change for women and their communities.

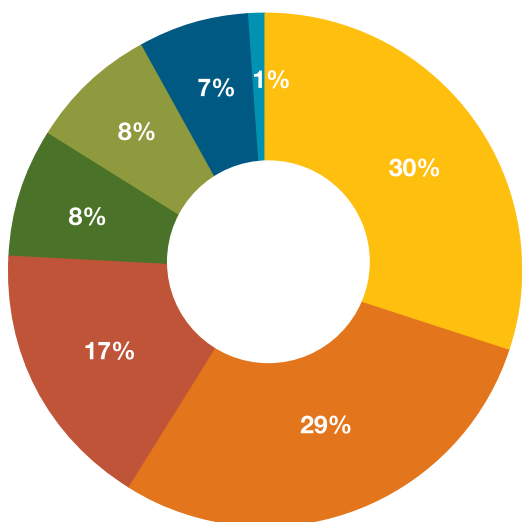
2021/22 was the first year in our three year plan to adjust our operations to deliver maximum impact in response to an increasingly complex and changing

environment. Our strong financial stewardship in recent years has put us in a good position to be able to undertake this investment plan in line with our organisational strategy.

This was the first of three years in which we will be reporting a planned deficit as we implement this plan to deliver high quality projects supported by capable staff, secure technology and efficient processes.

Our sound balance sheet has continued from last year and our liquidity position (ability to access cash when it's needed) has meant that we have been able to respond rapidly when crises hit. Our prudent reserves management will continue to provide a good platform for our planned investments.

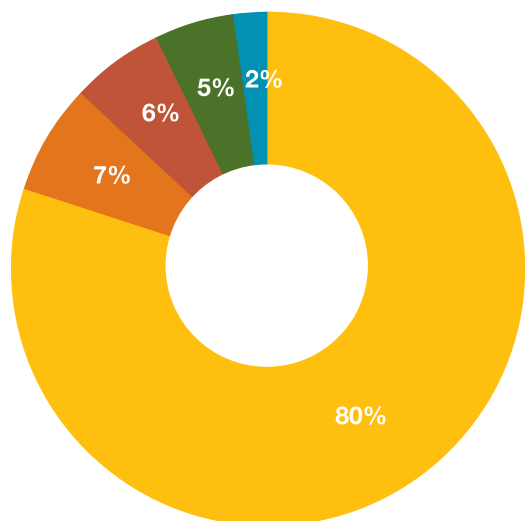
HOW YOU SUPPORTED CARE AUSTRALIA



Our total revenue in 2021/22 was \$70.4m. Despite the unpredictability of life in Australia, our donors proved once again how generous they are. We saw incredible support for our emergency appeals, which, combined with other contributions, saw public fundraising increase by 5% this year to \$12.3m. Our grant revenue in the previous year was 7% higher than this year's \$58.4m, largely due to surge funding in response to the COVID-19 crisis in our region.

- Grants – CARE International members (30%)
- Grants – Other Australian (29%)
- Public Fundraising (17%)
- Grants – DFAT (8%)
- Grants – Multilateral agencies (8%)
- Grants – Other overseas (7%)
- Other income (1%)

THE IMPACT OF YOUR INVESTMENT



In 2021/22, our expenses decreased by 2% to \$70.9m. We spent \$57.2m on our international programs which represented 80% of our total expenditure. Prudent cost control ensured that we were able to keep accountability and administration costs to 5% and fundraising costs to 6% of this total.

- Funds to International Programs (80%)
- Program Support (7%)
- Fundraising (6%)
- Accountability and Administration (5%)
- Advocacy and Community Education (2%)

Funds to International Programs includes Development and Resilience Programming, which are the funds we invest in supporting local communities to run long-term development programs, the logistics required, and the costs of expert programming staff to ensure the impact is maximised. Also in this category are funds spent on Emergency and Humanitarian Action which are the lifesaving measures taken to support women and marginalised groups to anticipate, prepare for, respond to, and recover from natural disasters, conflicts and economic shocks. It includes disaster readiness and risk-reduction measures like training and prepositioning of supplies, support given to people in times of crisis, as well as the logistics required, and the costs of expert humanitarian staff to ensure the impact is maximised.

Program Support includes the experts and advisors who deliver training, guidance, oversight, and evaluation of project initiatives and urgent emergency action by CARE Australia, as well as the costs of staff who are employed by the CARE International confederation to more cost-effectively provide services and expertise to all of its members — all in the name of maximising impact for the women we work with.

Fundraising is how we secure cash donations, grants, and investments from long-term supporters. It covers the costs of our expert fundraising staff, our efforts to acquire new donors, and the provision of supporter care services — all of which help ensure our critical programming and advocacy can continue into the future with as much impact as possible.

Accountability and Administration refers to many of the costs required to ensure CARE Australia remains a strong, innovative and accountable organisation with a team capable of achieving our goals. This includes investments in infrastructure, technology and cybersecurity, human resources, finance and accountability, quality assurance and risk management, as well as the costs of our key leadership, administrative and support staff — in effect, the costs of ensuring that we operate in impactful and effective ways.

Advocacy and Community Education supports local partners to tackle inequality at a community level as well as petition for change. It also ensures members of the public in Australia and around the world are aware of social justice issues and the ways to overcome them, and are able to do their part.

Visit care.org.au/finances2022 to read CARE Australia's full financial statements for 2021/22

Thank you from the Board

It is heartwarming that Australians continued to give this year; your generosity enables us to support women through unprecedented adversity.

I am especially appreciative of our dedicated staff – in Australia, in the countries where we program, and in the organisations we partner with. Despite the world's ongoing challenges, our teams have continued their vital work.

COVID-19 is still stripping back decades of gains made by women; climate change ravages the most vulnerable; and the war in Ukraine is compounding a global hunger crisis. Sadly, the need for our work is greater today than it has been in our entire history.

CARE Australia is rising to that challenge and I am proud that we continue to lead by example within the global CARE confederation.

I offer my heartfelt thanks to our donors, partners and staff, all of whom work together to build a better future.



Marcus Laithwaite
Chair CARE Australia

Members

Marcus Laithwaite Director since 2017, Chair from 2020

Joseph Tesvic Director since 2016, Treasurer from 2020

Diana Nicholson Director since 2019

Dr Phoebe Wynn-Pope Director since 2018

Joanne Thomson Director since 2021

Morgana Ryan Director since 2021

Peter Varghese AO Director since 2019

David Feetham Director from 2013 to November 2021

Committee members and observers

Natalie Kyriacou OAM

Fundraising & Marketing Committee since 2021

Moana Leilua

Board Observer since January 2022

About CARE Australia

Throughout this report, CARE Australia refers to our operations in Australia, as well as Australian-based donor-supported and/or funded programs and emergency responses in the seven Country Offices we manage (Cambodia, Laos, Myanmar, Papua New Guinea, Timor-Leste, Vanuatu and Vietnam) and the six countries in which we work through partners with no direct CARE presence (Fiji, Kiribati, Samoa, Solomon Islands, Tonga and Tuvalu).

We also collaborate with other CARE Members, Candidates, Affiliates and Country Offices. From Afghanistan to Syria, from Bangladesh to Ukraine, we utilise the CARE confederation's resources to maximum effect.

CARE Australia was established in 1987. Former Prime Minister the Rt Hon. Malcolm Fraser AC CH was the founding Chair. We rely on the generous support of the Australian public to fund our work. We build on this support by attracting additional funds from institutional donors such as DFAT and the United Nations.

Unless otherwise indicated, all of the data in this report is from the 2021/22 financial year and all dollar figures are in Australian Dollars (AUD).

About CARE International

Throughout this report CARE International or CARE refers to the entire CARE International organisation consisting of a confederation of 21 International Members, Candidates and Affiliates — Australia, Austria, Canada, Czech Republic, Denmark, Egypt, France, Georgia, Germany, India, Indonesia, Japan, Luxembourg, Morocco, Netherlands, Norway, Peru, Sri Lanka, Thailand, the UK and the USA — forming one of the world's largest independent, international emergency relief and development assistance organisations which worked in 111 countries in 2021/22. The national agencies operate independently but cooperate closely and work together with the CARE International Board and Secretariat, based in Geneva.

CARE International was founded in 1945.

Feedback

We welcome feedback on this report and in relation to our operations and conduct. Please send any feedback or complaints to Company Secretary, CARE Australia, PO Box 372, Collins St West, Melbourne, VIC, 8007 or complaints@care.org.au.

Feedback and complaints can also be lodged in each of the countries in which CARE Australia works via CARE Line at care.ethicspoint.com. Further details can be found in CARE Australia's complaints policy: care.org.au/complaintspolicy.

Complaints relating to a breach of the ACFID Code of Conduct by an ACFID member can be made to the ACFID Code of Conduct Committee via acfid.asn.au/content/complaints.

Read our Privacy Policy at care.org.au/privacy-policy.

Support

To contact us please call 1800 020 046.

Timor-Leste: Maria and Daniel made it through the pandemic lockdowns by sharing their family's chores and working together to grow healthy vegetables with seeds provided by CARE Australia.



CARE Australia

1800 020 046
 info@care.org.au
 care.org.au
 ABN 46 003 380 890

Canberra Office

Ground floor
 243 Northbourne Avenue
 Lyneham ACT 2602

Melbourne Office

Level 4
 53 Queen Street
 Melbourne VIC 3000



Supporting women.
 Defeating poverty.

care.org.au    